

All rights reserved by Kelsey Design Associates
 No part of this publication may be reproduced, stored in a retrieval system or transmitted in any form or by any means without the prior permission of Kelsey Design Associates
 All dimensions to be checked on site and any discrepancies reported to Kelsey Design Associates
 Architecture: Kelsey Design | Interior Planning: M Project Management

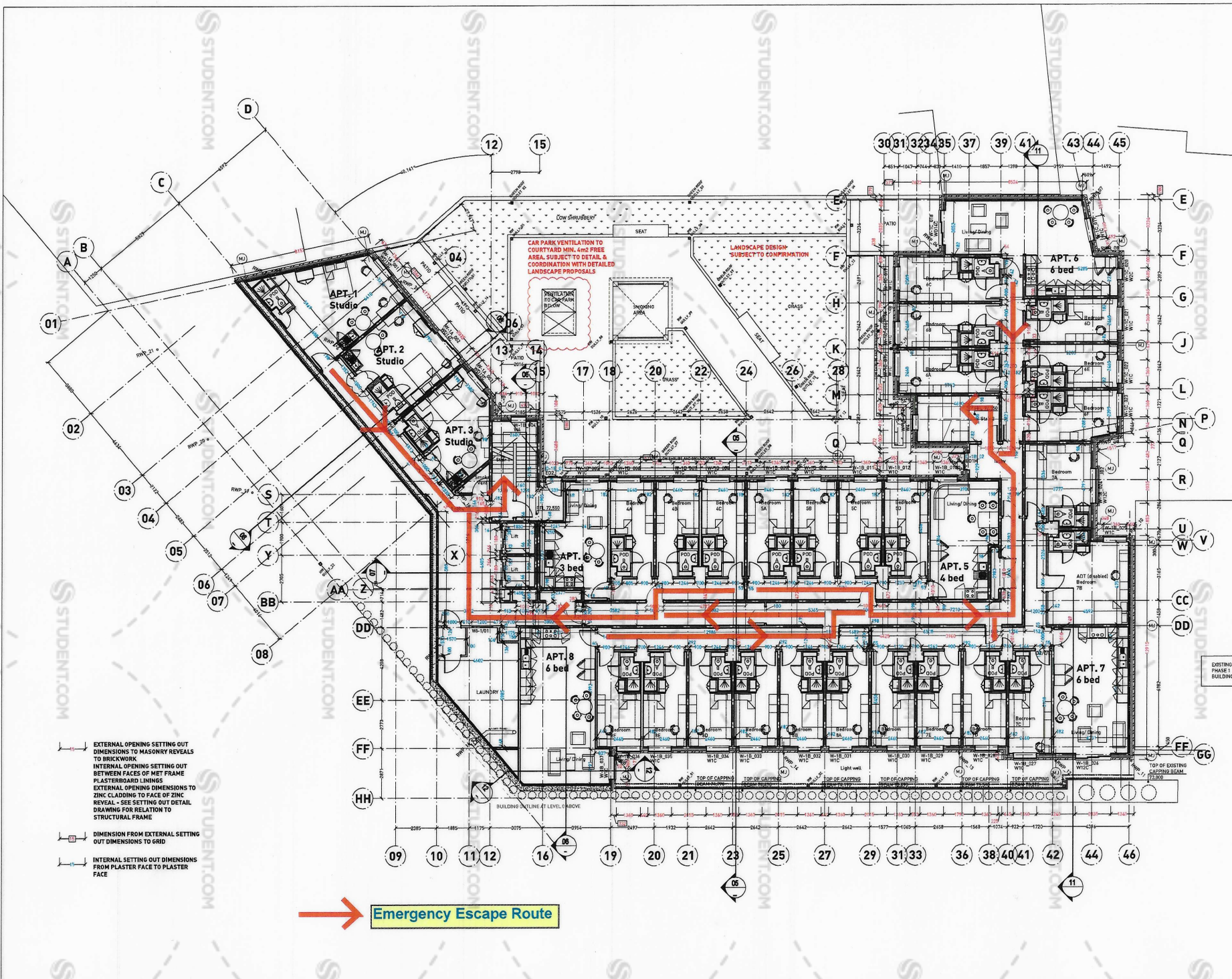
SVP DRAINAGE TO MAE CONSULTANTS DETAILS
PODIUM LEVEL DRAINAGE OUTLETS SUBJECT TO CONFIRMATION OF LANDSCAPING LAYOUT & DETAILS
IT IS IMPERATIVE THAT FOR 182 MET FRAME STRUCTURAL WALLS WITH ONE RESILIENT BAR, THE BAR IS FIXED TO THE STEEL AS INDICATED ON THESE DRAWINGS IN ORDER TO ENSURE INTERNAL PLASTER TO PLASTER DIMENSIONS OF ROOMS ARE MAINTAINED, STUDY BEDROOMS MIN. 2450
ROOM ARRANGEMENT INDICATIVE ONLY - REFER TO KDA ROOM LAYOUT DRAWINGS FOR ALL ROOM LAYOUT DETAILS
 CURRENT REVISIONS INDICATED BY CLOUD

Revision: Date
 Rev A: 26/09/17
 Internal Structural Opening Setting Out Dimensions added, key to dimensions added. Wall - C141-44 increased to structural 188. Wall - D104-45 corrected to 188. Grid 17 corrected 10mm towards grid 18. Note regarding resilient bar to 182 walls added.
 Rev B: 02/10/17
 Issued for construction. Staircase 1 new wall and associated gridlines moved by 520mm to enable staircase walls to align as required by PAV. External fire riser included to coordinate with MAE consultants requirements.
 Rev C: 09/10/17
 The columns added, lift openings added, room numbers amended to have better reference, mobility and ADT (adaptable) rooms amended as instructed. Finish floor levels added, movement joints and riser panel added.
 Rev D: 31/10/17
 Podium riser door increased to 510mm. Door position to APT. 4 revised. Riser master guides to light well added.
 Rev E: 04/11/17
 Previously narrow podium riser door adj to GA, G increased from 810mm to 700mm, external fire enclosure removed as instructed by contractor. Position of ball landing window to riser 1 revised, by riser outer box dims indicated.
 Rev F: 21/11/17
 Wall details updated to S Eng's information. Proposed landscape design & podium drainage outlets added. Light well coping beam position updated and level information added.
 Rev G: 09/12/17
 Window references to apartments 1, 2, 3 & 8 revised, movement joint locations to gable walls added to S Eng's requirements.
 Rev H: 20/01/18
 Apt 1 floor position revised & cross corridor door omitted, cross corridor walls & fire escapes revised, laundry glass screen omitted internal window added, lobby and door added, associated cabinet wall amended to 1585mm.
 Rev I: 03/03/18
 Dimension gridline F corrected, additional plaster face dims added to H & B partitions, kitchen & studio layouts indicated.
 Rev J: 10/03/18
 Dims to studio entrance doors to Apt 2 & 3 revised to 1000mm.

Movement joint position
 Wall ties to movement joints to S Eng's details
 PAW to approve all movement joint locations



project no: 12/03
 project title: Impact 2
 location: Edward Street SHEFFIELD
 drawing no: 002
 drawing title: LEVEL -1 PLAN
 revision: J
 date: Sept 2013
 scale: 1:100 @ A1
 drawing status: FOR CONSTRUCTION



- EXTERNAL OPENING SETTING OUT DIMENSIONS TO MASONRY REVEALS TO BRICKWORK
- INTERNAL OPENING SETTING OUT BETWEEN FACES OF MET FRAME PLASTERBOARD LININGS
- EXTERNAL OPENING DIMENSIONS TO ZINC CLADDING TO FACE OF ZINC REVEAL - SEE SETTING OUT DETAIL DRAWING FOR RELATION TO STRUCTURAL FRAME
- DIMENSION FROM EXTERNAL SETTING OUT DIMENSIONS TO GRID
- INTERNAL SETTING OUT DIMENSIONS FROM PLASTER FACE TO PLASTER FACE

Emergency Escape Route